

# GETAC B360 ACCESSORY SPEC BROCHURE



## B360

Fully Rugged  
**Notebook**

Maximum Performance  
More Secure  
As Rugged As It Gets

# B360 SPARE MAIN BATTERY

## Features & Benefits

The Getac B360 Spare Main Battery is designed to provide the main power source for your device when the AC adapter is not connected. It is designed with an LED power indicator and status check button, which allows users to identify the battery capacity status at a push of a button.

### Product Information

Battery type: Lithium-ion  
Cell designation: 3S1P  
Output Voltage: 11.1V  
Capacity: typical 2100mAh; min.  
2040mAh

Dimensions :  
L 141.05 x W 74.3 x H 10.1mm  
Weight: 154g

### SKU ID

SKU ID : GBM3X6

### Product Photo



# 90W AC ADAPTER

## Features & Benefits

This adapter is designed to power the B360 and charge its internal battery from an AC power source.  
A country-specific power cord is included with the adapter to fit the local power outlet in your destination country.

### Product Information

Input : 100V-240V

Output : 19V, 4.74 A, 90W

Dimensions :

L 129 x W 53 x H 30.5mm

Weight : 368g

Input cable length : 1830mm

Output cable length : 1800mm

### SKU ID

SKU ID : GAA9\*5

\* EU = E, US = U, UK = K, AU = A,  
PR = C, TW = T - Power cords

### Product Photo



# 90W MIL-STD-461 AC ADAPTER

## Features & Benefits

This MIL-STD-461G AC adapter has passed stringent military standards and testing specification to ensure the conducted emissions (CE), conducted susceptibility (CS), radiated emissions (RE), and radiated susceptibility (RS) of the adapter meets the requirements for the control of electromagnetic interference.

### Product Information

Input : 115V-230V, 1.6A 50~60Hz

Output : 19V, 4.74A, 90W

Dimensions :

L 170 x W 75 x H 45mm

Weight : 880g (without power cord)

Input cable length : 1530mm

Output cable length : 1800mm

### SKU ID

SKU ID : GAAG\*5

\* EU = E, US = U, UK = K, PR = C  
- Power cords

### Product Photo



# 120W OFFICE DOCK ADAPTER

## Features & Benefits

Specifically designed for use with the office docking station and B360 Pro carrying discrete Graphics Processing Unit, this 120W AC adapter provides a more efficient delivery of power to your devices.

### Product Information

Input : 100V-240V

Output : 19V, 6.32A Max.

Dimensions :

L 131.5 x W 69 x H 25.6mm

Weight : 412g

Input cable length : 1830mm

Output cable length : 1800+/-50mm

### SKU ID

SKU ID : GAA3\*2

\* EU = E, US = U, UK = K, AU = A,  
PR = C, TW = T, KR = R, IN = I -  
Power cords

### Product Photo



# 120W DC VEHICLE ADAPTER

## Features & Benefits

The 120W vehicle adapter comes with a choice of two types of connections: a bare wire with individual wire ends already stripped, and a cigarette lighter plug for easy connection to the cigarette lighter socket in the vehicle interior, providing a convenient way to charge and power your tablet while you are on the road.

### Product Information

Input Voltage : 11VDC ~ 32VDC  
Output Voltage : 19VDC  
Output Current : 6.32A Max.

Case Dimensions :  
L 131.5 x W 65.6 x H 30mm  
Weight : 362g  
Input cable length : 1900mm  
Output cable length : 1000mm

### SKU ID

SKU ID : GAD2X4  
(Cigarette Lighter Plug Version)  
GAD2X8 (Bare Wire Version)

### Product Photo



Cigarette Lighter Plug Version



Bare Wire Version

# B360 EXTERNAL DUAL BAY BATTERY CHARGER

## Features & Benefits

Getac B360 External Dual-Bay Charger is designed to charge up to 2 B360 batteries at the same time. It provides you the benefit of charging and storing the 2 batteries together when there are limited space and power sockets. The two bays have two channels, each with their own LED power indicators. The integrated five-light LED power indicators display the charge of each battery.

### Product Information

AC Input : 100V~240V  
DC Output : 17.4V, 4A Max.  
Number of charge bays : 2 bays

Dimensions :  
L 160 x W 180 x H 72.5mm  
Weight : 1.2kg

### SKU ID

SKU ID	Description
GCMC*H	Dual Bay Battery Charger W/ 90W AC Adapter

\* EU = E, US = U, UK = K, AU = A,  
PR = C, TW = T - Power cords

### Product Photo



# B360 MULTI BAY BATTERY CHARGER

## Features & Benefits

This 8-bay battery charger is designed with 8 charging bays for charging multiple battery packs simultaneously, providing an efficient charging solution for different situations. It provides users with an efficient charging solution. The integrated five-light LED power indicators display the charge of each battery.

### Product Information

AC Input : 100V~240V AC, 4.2A  
50~60Hz

DC Output : 19.5V, 16.9A  
w / 330W AC Adapter

Number of charge bays: 8 bays

#### Dimensions :

L 465 x W 245 x H 101~117.4 mm

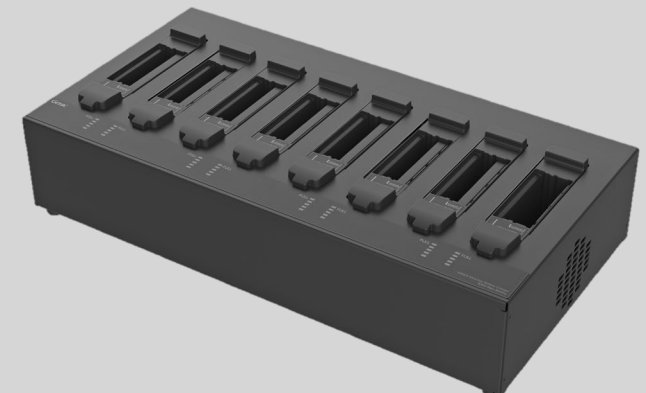
Weight : 4.7 kg, not including  
battery packs

### SKU ID

SKU ID	Description
GCEC*L	Multi-bay Battery Charger (Eight \ Bay) w/ 330W AC Adapter

\* EU = E, US = U, UK = K, AU = A,  
PR = C, TW = T - Power cords

### Product Photo





# B360 MAIN STORAGE with Canister

## Features & Benefits

Getac B360 Main Storage with canister is designed to provide you the ease of installation and allow you to remove your confidential data when your device is sent for service.

### Product Information

SSD Storage option :

256GB, 512GB, 1TB

Type: PCIe NVMe SSD

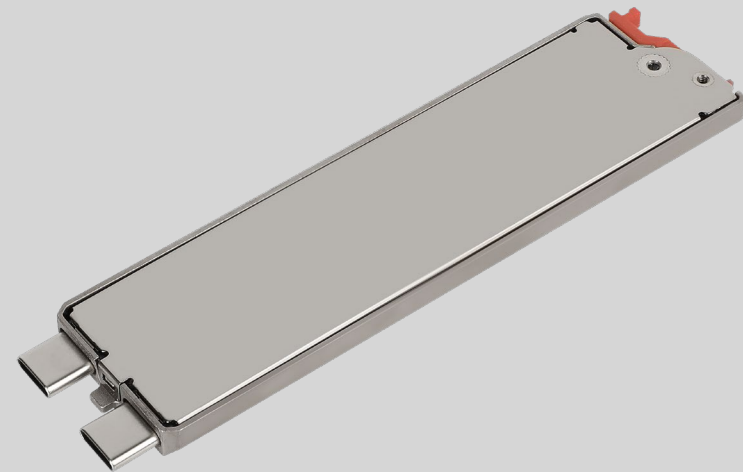
Dimensions :

L 110.5 x W 27 x H 5mm

### SKU ID

SKU ID	Description
GSSEX3	256GB PCIe SSD
GSSFX3	512GB PCIe SSD
GSSGX3	1TB PCIe SSD

### Product Photo



# B360 SPARE SECOND STORAGE with Canister

## Features & Benefits

Getac B360 Spare Second Storage with canister is designed to provide you the ease of installation and allow you to remove your confidential data when your device is sent for service.

### Product Information

SSD Storage option :  
256GB, 512GB, 1TB  
Type: SATA SSD

Dimensions :  
L 110.5 x W 26 x H 6mm

### SKU ID

SKU ID	Description
GSS2XD	256GB SATA SSD
GSS4XF	512GB SATA SSD
GSS0X9	1TB SATA SSD

### Product Photo



# B360 OFFICE DOCK<sub>with AC Adapter</sub>

## Features & Benefits

The Getac office dock brings out multiple I/O ports for connecting essential peripheral devices in the office environment. Through the integrated ethernet, RS232, or USB connections, users can quickly collect and synchronize field data with central offices for real-time reporting and analytics.

### Product Information

Dimensions :

L 380.1 x W 291.2 x H 77.2 mm

Weight : 1.615kg

\* w / 120W AC Adapter

I/O Ports :

DC in Jack x 1

Audio Output x 1

Microphone x 1

USB 2.0 x 2

USB 3.0 x 3

LAN x 2

HDMI x 1

VGA x 1

Serial Port x 1

Kensington Lock x 1

### SKU ID

SKU ID : GDOF\*Z

\* EU = E, US = U, UK = K, AU = A,  
PR = C, TW = T - Power cords

### Product Photo



# CARRY BAG

## Features & Benefits

Constructed of durable Nylon/air mesh fabric, and featuring an adjustable padded shoulder strap, this compact carry bag provides sturdy protection for your B360 Fully Rugged Notebook while giving maximum comfort.

The functional pockets inside offer the optimal solution to transport the tablet and needed accessories together in one case, delivering extra convenience and go-anywhere productivity to mobile professionals.

### Product Information

Dimensions : L 405 x W 330 x D 100mm

Weight : 1335g

Main Material : Nylon, air mesh fabric

### SKU ID

SKU ID : GMBCX7

### Product Photo



# CAPACITIVE HARD TIP STYLUS & TETHER

## Features & Benefits

This capacitive stylus is lightweight and easy to control, allowing smooth and comfortable interaction with the touch screen without worrying about scratching the screen or leaving fingerprints on it.

The stylus comes with a tether to keep it attached to the tablet, so it doesn't get lost or misplaced.

### Product Information

Stylus Dimensions : 108.7 mm ; Ø9 mm

Tip size : 2.7 mm ; Ø2.8 mm

Color : Black

Tether Length : 304 mm

### SKU ID

SKU ID : GMPSXK

### Product Photo



# B360 PROTECTION FILM<sub>AG</sub>

## Features & Benefits

This screen protection film is cut precisely to fit the B360 Fully Rugged Notebook and is easy to install and remove without leaving a sticky residue. With anti-glare coating, it not only protects the screen from the rigors of daily use but also help diffuses light on the screen and reduces glare, providing effortless readability for displayed information under common ambient lighting conditions.

### Product Information

Dimensions :

L 303.0 x W 174.6 x 0.24mm

Main Material : PET

### SKU ID

SKU ID : GMPFXP

### Product Photo

